

How to Connect Cricut to Mac: A Stepwise Guide

I'm not sure whether you know [how to connect Cricut to Mac](#). But if you are a beginner, this tutorial will be the perfect guide for teaching you how to connect your Cricut machine to your MacBook hassle-free.

Since the day I started crafting on Cricut, I have changed several devices, from a Windows computer to a Mac and then the latest version of Mac. Due to this, I had to connect my Cricut machine to these devices again and again. It helps me to master this connection process.

Today is the day I can teach you how to connect your Cricut to your compatible device. However, I will only cover connecting with a Mac in this guide. So, if you also expect the same, let's get started!

Minimum System Requirements to Connect Cricut to Mac

Before I delve into **how to connect Cricut to Mac**, let me tell you which MacBook is suitable for you. A compatibility check is a must; otherwise, it will cause an issue when you run Cricut Design Space. Below, I have mentioned the requirements for checking on your system before connecting it to your Cricut machine. It will also be helpful when you will download the app on it.

Here's what you need on your Mac computer:

- Ensure you use the latest operating system, such as macOS 11 or later.
- Your Mac should have a 1.83 GHz CPU.
- The RAM size is 4 GB.
- The free disk should be 2 GB.
- A MacBook with built-in Bluetooth is a plus point. However, if you prefer a wired connection over a wireless one, your Mac must have a USB port.
- The screen resolution should be 1024px x 768px.

How to Connect Cricut to Mac via Bluetooth and USB?

Connecting Cricut to Mac is simple. However, it also depends on how you want to connect it to your Mac. For example, there are two ways to connect. The first is a USB connection, and the second is a wireless connection using Bluetooth. A USB cord provides a stable connection, whereas a wireless Bluetooth connection gives you peace of mind because there are no untidy wires around. Let's delve into the steps below:

Method 1: Connect Cricut to Mac via a USB Cord

In order to connect your Cricut machine to your MacBook using a USB cord, you have to follow the steps below:

1. First, you need to switch on the machine by plugging its power cable into a wall outlet.
2. After that, turn on the MacBook operating system.
3. Then, grab a USB cord and plug one end into the machine and the other into the computer.



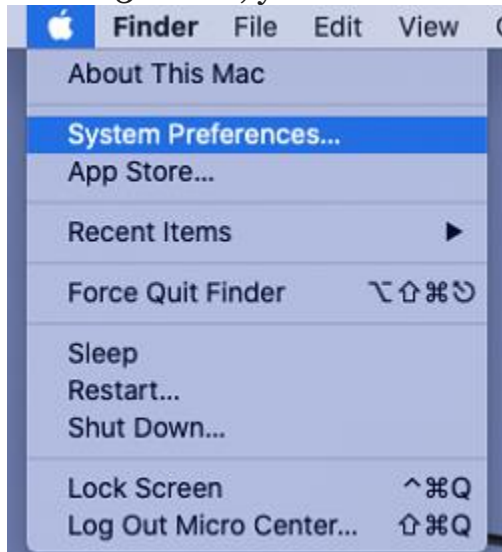
Once you are plugged in, your Mac will be connected to your Cricut machine.

1. Now, you are ready to use the software. Download and install it, then start crafting hassle-free.

Method 2: How to Connect Cricut to Mac via Bluetooth

If you want to know **how to connect Cricut Bluetooth to Mac**, follow the steps given below:

1. Connect Cricut to the wall outlet and switch it on. At the same time, you have to turn on the MacBook.
2. Then, you will need to navigate to your Mac's **Apple menu**.
3. Now, you should select **System Preferences**.

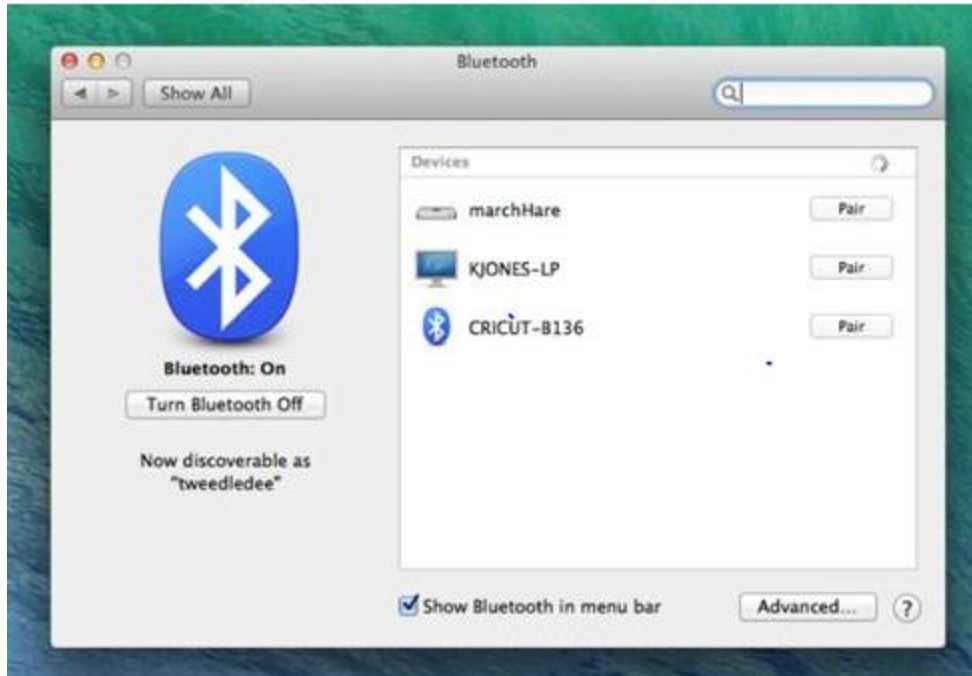


After that, you have to find the **Bluetooth** option on your Mac.



Next, you will need to turn on the Bluetooth.

1. Also, hold on and let your device find your Cricut model, which you have placed closer to your Mac.
2. If it has yet to be detected, make sure the distance between your Cricut and Mac is at most 15 feet.
3. When the device is detected, click on it and then hit the **Pair** button to connect.



Did you understand [how to connect Cricut to Mac](#)? If so, congratulations on successfully connecting your Cricut. Now, you are ready to set up your Cricut without any problems.

FAQs

Question 1: Can I connect all Cricut machines to Mac via USB?

Answer: Although Cricut machines can be connected using a USB cable or Bluetooth, you can not connect your Cricut Joy through a USB cord. This Cricut Joy model doesn't have a USB port, so you can't connect it using a USB cable. There is only one option: wireless Bluetooth connection.

Question 2: Do I need a Bluetooth adapter to connect Cricut to Mac?

Answer: If your computer doesn't have a USB port, you might need to use a Bluetooth adapter to connect a Cricut Explore or Explore One machine to a Mac system. Otherwise, you will always have the option to connect via a USB port or cord, which provides a stable connection.

Question 3: What do I need to connect Cricut machine?

Answer: If you are connecting to a Cricut machine, you will need a wireless Bluetooth adapter to run your machine and perform every operation you want. Otherwise, a wired connection is also the best option to form a stable connection to the machine without any hassle.

Visit here For More Information: [Cricut.com/setup](https://www.cricut.com/setup)

[Pinterest](#)