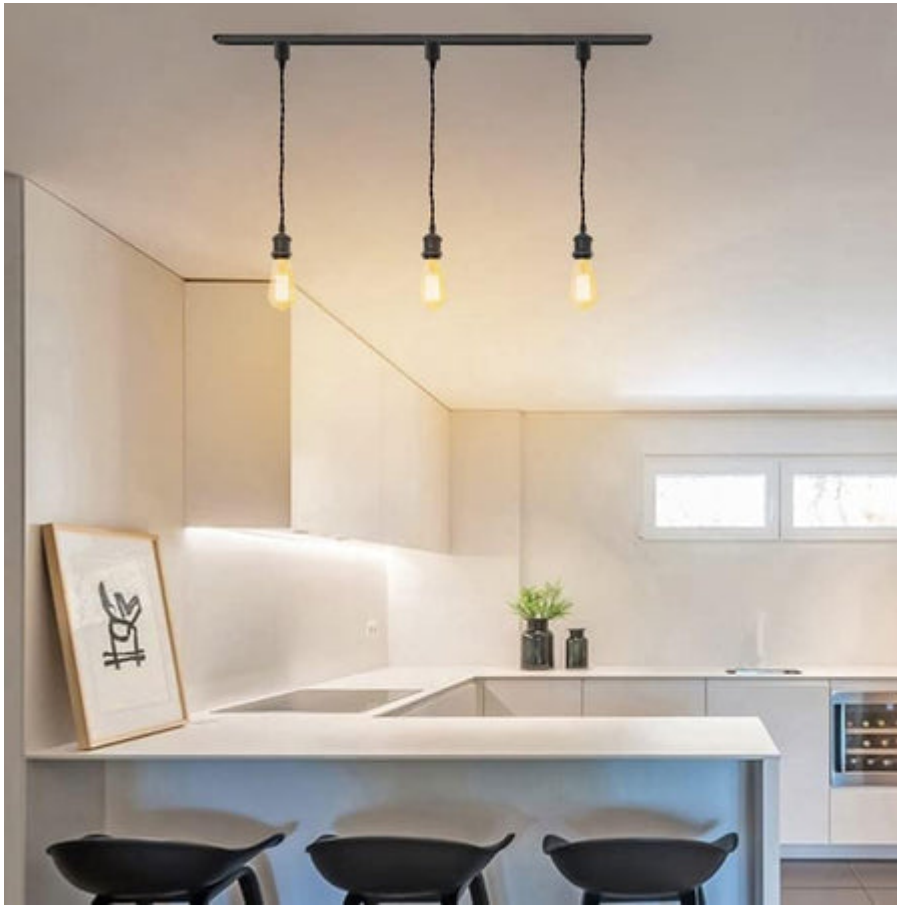


Transform Your Space: Discover the Ultimate Track Fixture Lights That Everyone's Talking About!

[Track fixture lights](#) have surged in popularity as a go-to choice for modern interior design, and for good reason. These innovative lighting solutions not only provide excellent functionality but also enhance the aesthetic appeal of any space. Imagine walking into a room where the lighting is perfectly adjusted to highlight your art collection or illuminate your workspace. This article aims to delve into the various options and features available in track fixture lights, helping you make an informed decision on the best fit for your needs.



Understanding Track Fixture Lights

At their core, track fixture lights are versatile lighting systems that consist of several key components: tracks, fixtures, and bulbs. The track serves as a conduit for electrical power and allows the fixtures, or light heads, to be easily positioned and repositioned along its length. This unique setup enables users to customize their lighting arrangement according to their preferences. Various types of bulbs—such as LED, incandescent, or halogen—can be used with these systems, providing options for different light intensities and colors. In essence, track fixture lights offer an adaptable lighting solution that can cater to any room's needs.

Benefits of Using Track Fixture Lights

One of the most appealing aspects of track lighting is its versatility. Whether you want to spotlight artwork in your living room or create a cozy ambiance in your kitchen, track fixture lights can do it all. The ease of installation is another significant advantage; many systems can be installed without the need for professional assistance. Furthermore, track lights can be adjusted to direct light wherever it's needed, making them an ideal choice for spaces that require varied lighting conditions. A friend of mine recently remodeled their home office and opted for track lighting. They love how they can easily shift the fixtures to focus light on their desk or display shelves, creating a functional and inviting workspace.

Key Features to Consider When Choosing Track Fixture Lights

When selecting track fixture lights, several key features should be taken into account. Style is essential; you want fixtures that complement your existing decor. Size matters as well—make sure the scale of the fixtures is appropriate for the room. Light output is another crucial consideration; different bulbs provide varying levels of brightness, which can drastically affect the mood of your space. Energy efficiency is increasingly important, too; opting for LED bulbs can save you money in the long run. Lastly, think about compatibility with smart home systems. Some track lighting can be integrated into your existing technology, allowing for remote control and automation. By evaluating these features, you can ensure that your chosen track fixture lights meet your specific needs.

Popular Styles of Track Fixture Lights

Track fixture lights come in a wide array of styles to suit different tastes and interior designs. Modern track lights often feature sleek lines and minimalist aesthetics, making them a perfect fit for contemporary spaces. Industrial styles, characterized by raw materials and an unfinished look, can add a charming rustic touch to lofts and urban apartments. On the other hand, traditional track lighting can evoke warmth and nostalgia, complementing classic decor elements. By

understanding the different styles available, you can choose track lights that not only illuminate but also enhance the overall look of your home.

Installation Tips for Track Fixture Lights

Installing track fixture lights can be a rewarding DIY project, but there are a few tips to keep in mind. First, ensure you have all the necessary tools, such as a drill, screwdriver, and level. Safety is paramount, so always turn off the power at the circuit breaker before starting any electrical work. If you're not comfortable with electrical installations, consider hiring a professional to ensure everything is set up correctly. A friend of mine took the DIY route and successfully installed track lights in their kitchen, and they couldn't be happier with the result. It's a great way to enhance your space while also adding a personal touch.

Enhancing Your Space with Track Fixture Lights

Track fixture lights offer a versatile and stylish lighting solution for anyone looking to elevate their space. As we've explored, these lights provide not only functionality but also a range of aesthetic options to fit any decor style. By understanding the key features and benefits, as well as how to choose and install these lights, you can transform your home or office into a well-lit haven. So why not explore the world of track lighting and see how it can enhance your living or working environment?