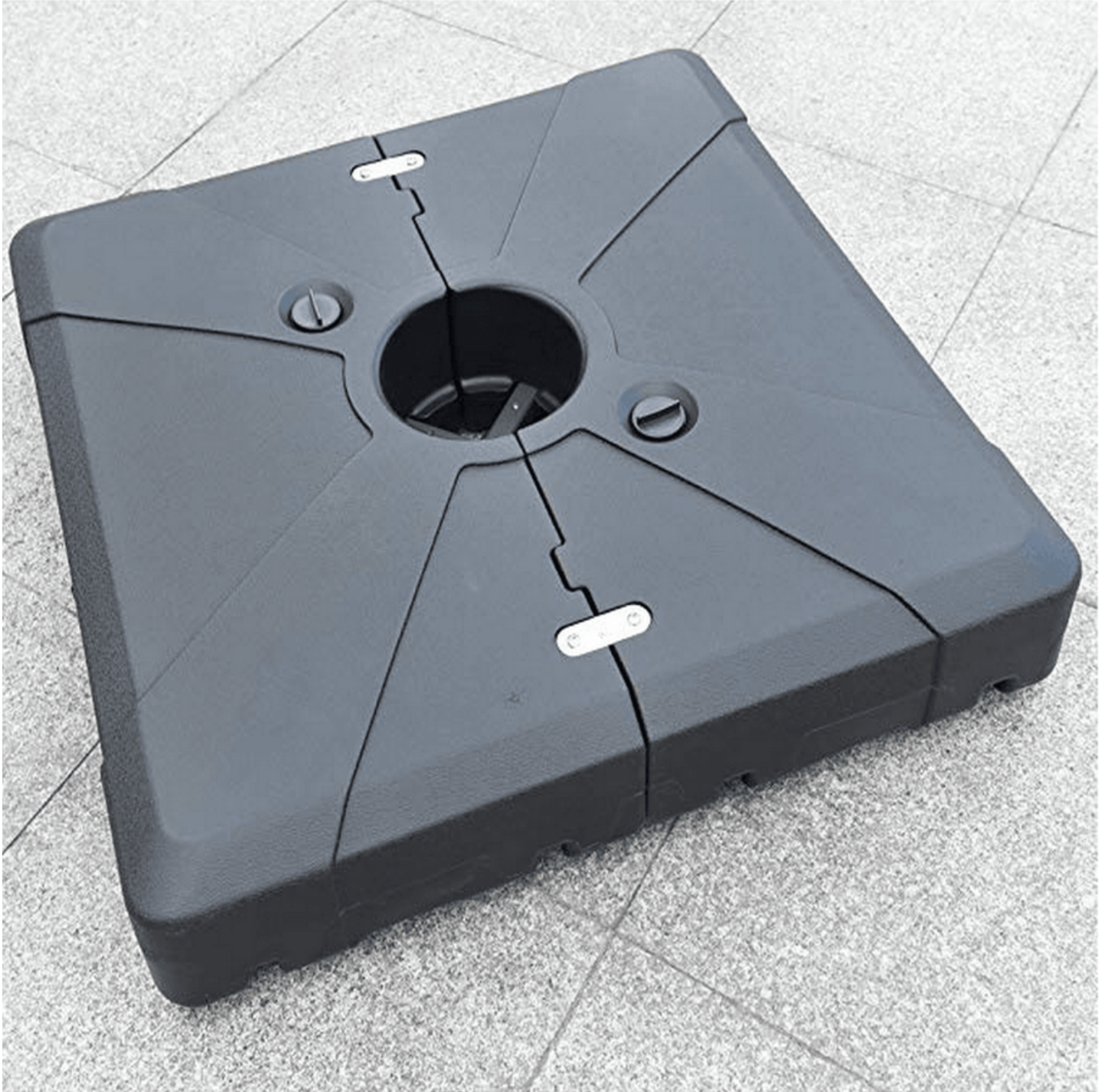


## Transform Your Outdoor Oasis: The Secret to Choosing the Perfect Patio Umbrella Base!

As the sun shines brightly and the temperature rises, the allure of outdoor living spaces becomes irresistible. A patio umbrella not only provides much-needed shade but also enhances the aesthetic appeal of your backyard, garden, or patio. However, to fully enjoy your outdoor oasis, it's crucial to invest in a suitable [patio umbrella base](#). This base is the unsung hero that ensures your umbrella remains stable and secure, protecting you and your guests from unexpected gusts of wind. In this article, we'll explore the essential factors to consider when selecting the right patio umbrella base, helping you make a more informed decision for your outdoor space.



### Understanding Patio Umbrella Bases

A patio umbrella base is a weighted platform designed to anchor your outdoor umbrella, preventing it from toppling over in windy conditions or during everyday use. It serves as a crucial component in maintaining the stability and functionality of your umbrella, allowing you to enjoy your outdoor activities without worry. There are several types of patio umbrella bases available, including free-standing bases, which are independent and can be moved easily, and table-mounted bases that attach directly to patio tables. Each type has its unique advantages and is suited for different outdoor settings, making it essential to choose the right one based on your specific needs and preferences.

### Factors to Consider When Choosing a Patio Umbrella Base

When selecting a patio umbrella base, several key factors come into play, including weight, material, size, and compatibility with various umbrella styles. The weight of the base is crucial, as it directly impacts the stability of your umbrella. A lightweight base may not provide the necessary support, especially in windy conditions. Additionally, the material of the base can affect its durability and resistance to outdoor elements. Size is another important consideration; the base should be proportionate to the umbrella for optimal performance. Lastly, ensuring compatibility between the base and your umbrella style is essential to avoid any issues during use.

### **Weight and Stability**

The weight of your patio umbrella base is critical for ensuring stability, particularly in windy conditions. A heavier base can resist strong gusts and keep your umbrella securely in place. As a rule of thumb, a base should weigh at least 50 pounds for a standard-sized patio umbrella. However, if you live in an area prone to high winds, consider opting for a base that weighs even more. If you're unsure, you can always consult with friends who have experience with outdoor setups—they often have valuable insights about what works best. Additionally, look for bases designed to hold water or sand, as they can provide extra weight when filled, making them a versatile option.

### **Materials and Durability**

The material used for patio umbrella bases can greatly influence their durability and performance over time. Common materials include concrete, plastic, and metal. Concrete bases tend to be the heaviest and most stable, making them ideal for windy locations. Metal bases are robust and often come with a stylish finish but may require a protective coating to prevent rust. Plastic bases are lightweight and portable, making them suitable for those who frequently rearrange their outdoor spaces. However, they may not withstand harsh weather conditions as well as heavier materials. It's always wise to consider your local climate and the specific demands of your outdoor environment when selecting the material for your base.

### **Maintenance and Care for Your Patio Umbrella Base**

To ensure the longevity and performance of your patio umbrella base, regular maintenance is essential. Start by keeping the base clean; remove debris and dirt buildup to prevent moisture retention, which can lead to rust or mold, especially in metal and plastic bases. If your base is made from concrete, inspect it periodically for cracks, and repair any damage promptly. For bases with removable weights, make sure to check the seals and fill levels if applicable. Storing your base indoors during the off-season can also help protect it from extreme weather conditions and prolong its life. A little care goes a long way in maintaining your outdoor setup.

### **Selecting the Right Base for Your Outdoor Space**

Choosing the right patio umbrella base is a vital step in enhancing your outdoor experience. A well-selected base not only ensures the stability and safety of your umbrella but also allows you to enjoy your outdoor space to the fullest. By considering factors such as weight, material, size, and compatibility, you can make a more informed decision that suits your needs. Remember, a strong foundation leads to a more enjoyable outdoor oasis, so take the time to select a base that complements your style and environment.