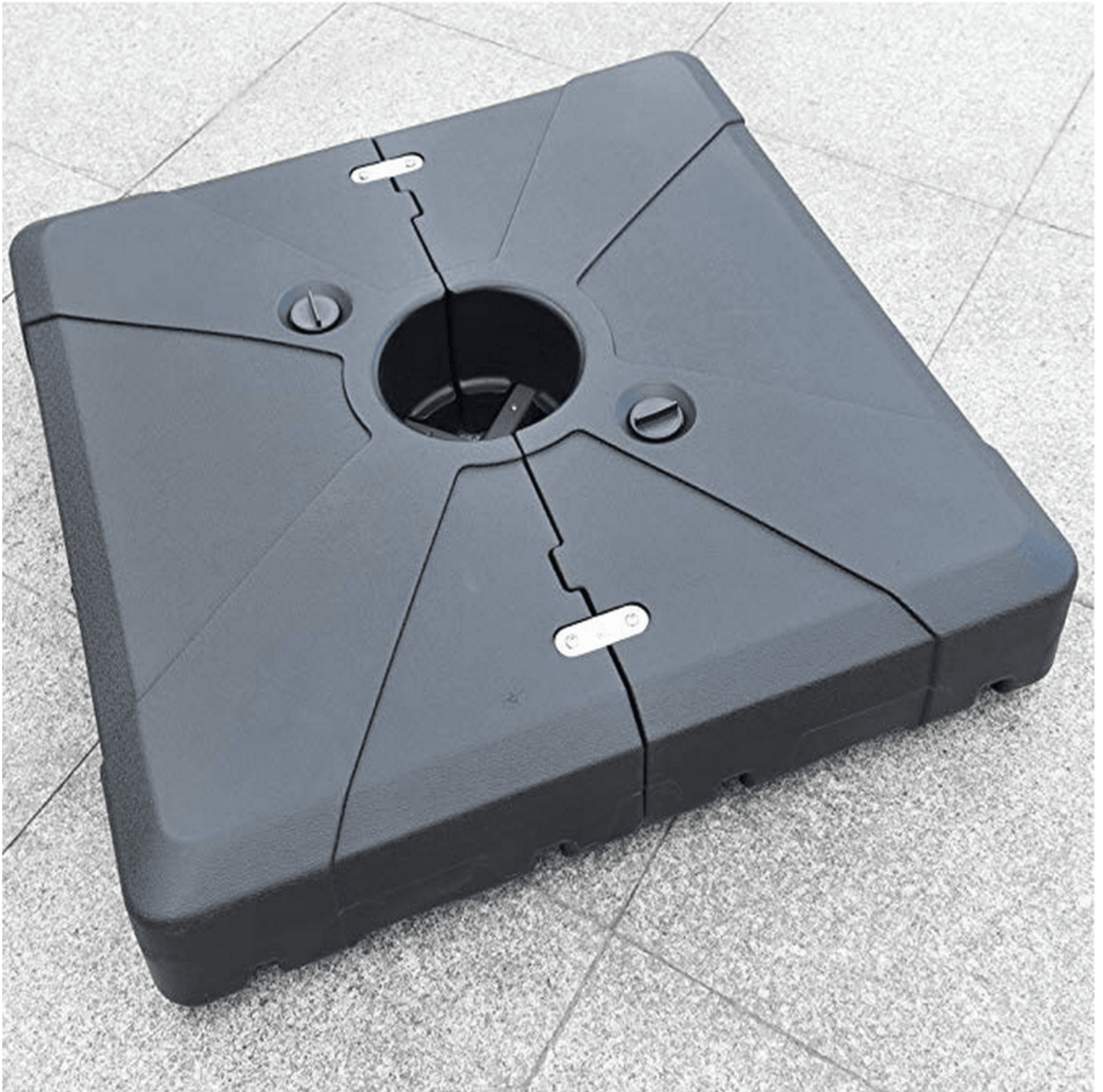


Transform Your Outdoor Space with This Stunning Hammered Bronze Umbrella Base!

Transforming your outdoor space is an exciting venture, and one of the key components in achieving a beautiful and functional patio is the patio umbrella. The right umbrella not only provides shade on a sunny day but also enhances the overall aesthetics of your setting. However, selecting the right patio umbrella base is just as crucial to ensure stability and safety. Enter the [hammered bronze finish umbrella base](#)—a piece that combines functionality with striking visual appeal. In this article, we will explore the benefits and features of a hammered bronze umbrella base, helping you make an informed choice for your outdoor oasis.



Understanding the Importance of a Good Umbrella Base

When it comes to patio umbrellas, the base is often overlooked, yet it plays a critical role in providing the necessary support and stability. A good umbrella base ensures that your umbrella remains upright, preventing it from tipping over in the wind or collapsing unexpectedly. This is particularly important if you have children or pets around, as it enhances safety for everyone in the vicinity. Many people, including my friend who owns a lovely café, have experienced the consequences of inadequate bases—umbrellas flying away in gusty winds, resulting in damage to property and a bit of embarrassment. Investing in a sturdy umbrella base not only alleviates these concerns but also enhances the usability of your patio umbrella, allowing you to enjoy your outdoor space with peace of mind.

Why Choose a Hammered Bronze Finish?

The hammered bronze finish is not just about looks; it offers a perfect blend of aesthetic appeal and practicality. The unique texture and rich color of hammered bronze beautifully complement various outdoor decor styles, from rustic and traditional to modern and chic. Its earthy tones can seamlessly blend with natural surroundings, enhancing the beauty of your garden or patio. Additionally, hammered bronze is known for its durability—it withstands the test of time and resists the elements, making it an excellent choice for outdoor furnishings. My neighbor, who recently redecorated her backyard, chose a hammered bronze umbrella base, and it has held up beautifully through rain and shine, adding character to her outdoor space rather than fading away.

Features to Look For in a Hammered Bronze Umbrella Base

When selecting a hammered bronze umbrella base, there are several essential features to consider. First and foremost, weight is crucial—heavier bases provide greater stability, ensuring that your umbrella remains secure even in windy conditions. Look for bases that are compatible with the size of your umbrella; after all, a mismatch can lead to instability. Additionally, consider design elements such as the shape and finish. A well-designed base can serve as a stylish accent to your outdoor decor. My friend's hammered bronze base features elegant curves that catch the sunlight beautifully, making it a conversation starter among guests. Ultimately, these features contribute not only to the functionality of the base but also to its visual appeal, allowing you to make a stylish statement in your outdoor area.

How to Style Your Outdoor Space with a Hammered Bronze Umbrella Base

Integrating a hammered bronze umbrella base into your outdoor space can be both rewarding and enjoyable. Start by considering your existing decor and color schemes—neutral tones can be complemented by the warmth of hammered bronze, while vibrant colors can create a striking contrast. Pair your umbrella with furniture in similar hues or textures to create a cohesive look. For instance, if you have wicker furniture, a hammered bronze base can add an elegant touch without overwhelming the design. In terms of layout, think about positioning the umbrella base in a way that encourages conversation—perhaps over a coffee table or dining area. My family often gathers around our patio table shaded by a beautiful umbrella, and the hammered bronze base adds an element of sophistication to our gatherings. With the right styling, this type of umbrella base can enhance the ambiance of your outdoor oasis.

Choosing the Ideal Outdoor Umbrella Base

In summary, a hammered bronze umbrella base is an excellent choice for those looking to enhance both the functionality and style of their outdoor spaces. Its ability to provide stability, combined with its aesthetic appeal, makes it a valuable addition to any patio or garden. As we've explored, the benefits of a good umbrella base go beyond mere support; it can elevate the overall look of your outdoor setting. If you're considering a transformation for your outdoor area, don't overlook the potential of a hammered bronze umbrella base—it's not just an accessory; it's a statement piece that reflects your style and enhances your outdoor experience.