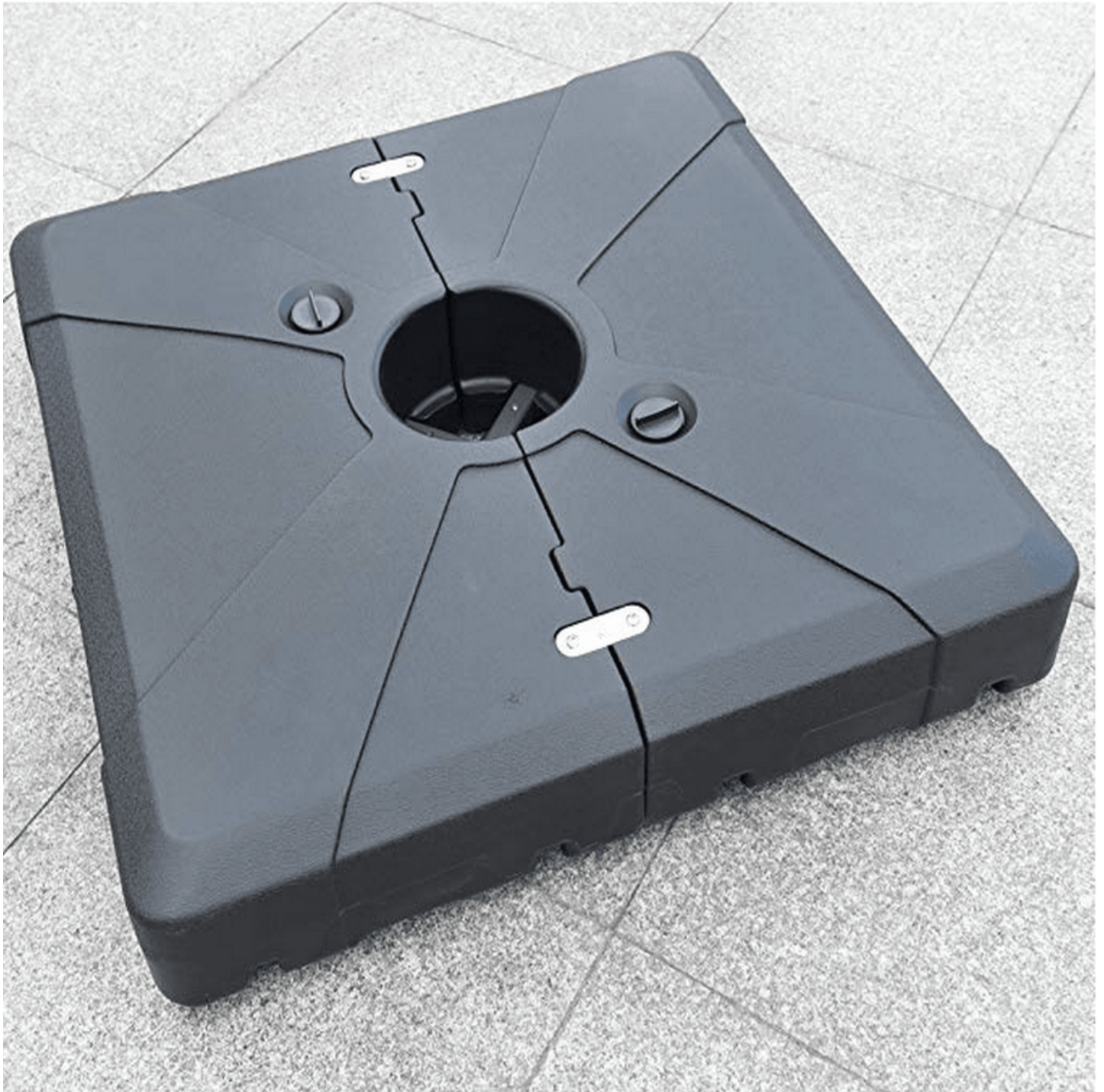


Discover the Perfect Patio Umbrella Base That Will Transform Your Outdoor Oasis!

When it comes to creating the perfect outdoor oasis, a well-chosen [patio umbrella base](#) is a crucial element, especially for those who have paver patios. Not only does a sturdy base provide the necessary support for your umbrella, but it also enhances the overall aesthetics and functionality of your outdoor space. Imagine enjoying a sunny afternoon, sipping lemonade under the shade of a beautiful umbrella, knowing that it is securely anchored to the ground. In this article, we will explore the different types of bases suitable for paver patios, ensuring that your outdoor experience is as enjoyable and safe as possible.



Understanding Paver Patios and Their Needs

Paver patios are a popular choice among homeowners due to their durability and aesthetic appeal. Composed of interlocking stones, these patios provide a distinct look and are often more versatile than traditional concrete. However, the unique characteristics of paver surfaces present specific challenges when it comes to securing a patio umbrella. The unevenness and spacing between pavers can make it difficult for standard bases to provide adequate support. Additionally, strong winds can easily lift a poorly secured umbrella, posing a risk of damage or injury. Therefore, understanding the specific needs of paver patios is essential in selecting the right umbrella base.

Key Features to Look for in a Patio Umbrella Base

When choosing a patio umbrella base for a paver patio, there are several key features to consider. First and foremost, weight is critical; a heavier base will provide better stability against wind gusts. Many recommend bases that weigh at least 50 pounds to ensure they remain firmly in place. Material is another important factor; options like concrete or cast iron offer durability and resistance to rust, making them ideal for outdoor use. Design compatibility is also crucial; the base should not only fit the umbrella pole securely but also complement the aesthetic of your patio. A well-selected base not only secures your umbrella but also enhances the beauty of your outdoor area.

Types of Patio Umbrella Bases Suitable for Paver Patios

There are various types of patio umbrella bases that work well with paver patios. Weighted bases are a popular choice, featuring a solid construction that provides stability without needing to be anchored to the ground. They come in various designs, from traditional to modern, allowing you to find one that fits your style. Another option is the in-ground base, which requires digging a hole in the paver patio to anchor the pole securely. While this option offers excellent stability, it may not be suitable for every homeowner due to installation complexity. Additionally, portable bases, which can be filled with water or sand, offer versatility but may require more frequent adjustments to keep the umbrella steady. Each type has its pros and cons, so it's essential to consider your specific needs and outdoor conditions before making a choice.

Installation Tips for Patio Umbrella Bases on Paver Patios

Installing a patio umbrella base on a paver patio may seem daunting, but with the right approach, it can be a straightforward task. Start by selecting the ideal location for your umbrella, ensuring it provides ample shade without obstructing pathways. For weighted bases, simply place the base in the desired spot and secure the umbrella pole in the designated slot. If you're opting for an in-ground base, use a shovel or auger to dig a hole deep enough to accommodate the base. Once the base is in place, fill the hole with gravel or sand to provide additional support. Make sure to use a level to ensure the base is even with the surrounding pavers. Remember to check the stability of the umbrella regularly, especially after strong winds or heavy rain.

Choosing the Right Base for Your Outdoor Space

In summary, selecting the right patio umbrella base for your paver patio is essential for creating a safe, functional, and visually appealing outdoor space. By understanding the unique needs of paver patios, considering key features such as weight and material, and exploring various base types, you can make an informed decision. With proper installation and care, your patio umbrella will not only provide the shade you need but also enhance your outdoor oasis for years to come. Enjoy the sunny days ahead, knowing your outdoor setup is secure and stylish!