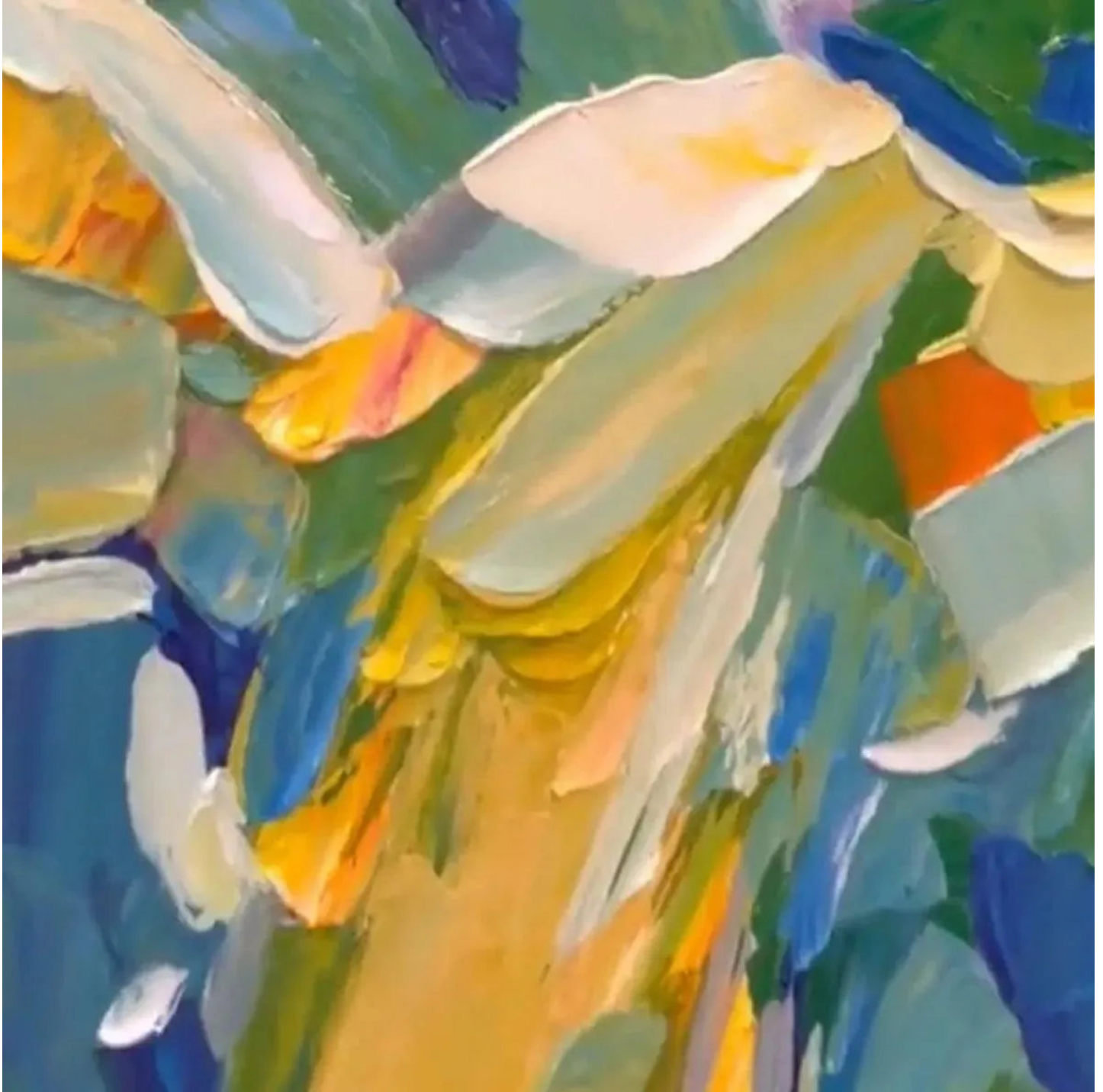


Unlock the Secrets of Captivating Large Artworks: Discover Styles, Artists, and Hidden Gems!

Large artworks have a unique ability to transform spaces and evoke intense emotions. They stand as bold statements in galleries, homes, and public spaces, captivating viewers with their scale and presence. In the art world, these monumental pieces are not just visually impactful; they often carry deep meanings, reflecting cultural narratives and individual expressions. This article will delve into the significance of large artworks, exploring various styles, notable artists, and hidden gems where these magnificent pieces can be discovered. Whether you're an art aficionado or a curious observer, understanding the realm of [big artwork](#) will enhance your appreciation for the art that surrounds us.



Understanding Large Artworks

Large artworks are defined by their substantial dimensions, often exceeding typical canvas sizes or sculptural forms. Unlike smaller pieces, which can be intimate or personal, large artworks dominate their surroundings, making them powerful focal points in any space. This impact can create a sense of awe and wonder, inviting viewers to engage in a more profound dialogue with the art. Moreover, large artworks are often seen as statement pieces, intended to provoke thought, inspire conversation, or convey a specific message. Their presence can alter the atmosphere of a room or public area, creating an immersive experience that smaller pieces may not achieve. For instance, I recall visiting a contemporary art exhibition where a colossal installation made entirely of recycled materials filled the gallery. It not only caught my eye but also sparked a discussion among attendees, illustrating the power of scale in art.

Styles of Large Artwork

When it comes to large artworks, several styles stand out, each with its unique characteristics and appeal. One of the most prominent styles is abstract art, which emphasizes color, shape, and form over representational accuracy. This style often invites viewers to interpret the artwork in personal ways, leading to varied emotional responses. Another significant style is mural art, which is often created in public spaces and serves not just as decoration but as a means of storytelling and cultural expression. Finally, installation art offers an immersive experience that can transform an entire environment, encouraging viewers to engage with the work in a physical and emotional manner. Each of these styles plays a crucial role in the landscape of large artworks, providing diverse ways to experience and appreciate art.

Abstract Art

Abstract art in large formats can be particularly striking, as it often emphasizes bold colors and dynamic forms that resonate deeply with viewers. The emotional impact of such pieces is profound; they can evoke feelings of joy, confusion, or introspection, depending on the viewer's perspective. The sheer scale of abstract works allows for a more intense experience, as individuals can find themselves enveloped in a world of color and shape, prompting personal reflection and interpretation.

Mural Art

Mural art holds a significant place in the realm of large artworks, often reflecting local culture, history, and community identity. These expansive paintings can transform blank walls into vibrant narratives, making art accessible to everyone. Famous murals, such as Diego Rivera's murals in Mexico or the works of Keith Haring in New York City, have become landmarks in their own right, drawing visitors eager to experience their stories and aesthetic beauty. The cultural significance of murals lies not only in their visual appeal but also in their ability to foster community engagement and dialogue.

Installation Art

Installation art represents a revolutionary approach to large-scale artworks, as it often incorporates various elements such as sculpture, video, sound, and even interactive components. Unlike traditional art forms, installation art aims to create an immersive environment that engages all the senses. Visitors might walk through an installation, interact with its components, or experience it from multiple perspectives. This transformative quality makes installation art a captivating form of large artwork, inviting audiences to participate in the creative experience.

Notable Artists of Large Artworks

Numerous artists have gained recognition for their contributions to large-scale artworks, each leaving a unique mark on the art world. These artists often push the boundaries of creativity, exploring new techniques and themes through their expansive works. Their creations not only dominate spaces but also challenge viewers to rethink their perceptions of art and its role in society.

Artist Spotlight 1

One prominent artist renowned for large artworks is Anish Kapoor. Known for his striking sculptures and installations, Kapoor's work often explores themes of perception and reality. His iconic piece, "Cloud Gate," located in Chicago, is a reflective stainless steel structure that transforms the surrounding skyline and invites viewers to engage with their reflections. Kapoor's ability to create monumental pieces that resonate with audiences has solidified his position as a leading figure in contemporary art.

Artist Spotlight 2

Another influential artist is Yayoi Kusama, whose large-scale installations are characterized by vibrant colors and repetitive patterns. Kusama's immersive environments, such as her "Infinity Mirror Rooms," engage viewers in a surreal experience that blurs the lines between reality and illusion. Her work often reflects her personal struggles with mental health, making her large artworks both visually stunning and deeply personal. Kusama's unique approach to large-scale art has made her a trailblazer in the contemporary art scene.

Discovering Hidden Gems: Where to Find Large Artworks

Finding large artworks can be an exhilarating adventure, as they are often hidden in plain sight or located in unexpected places. Art galleries, museums, and public spaces are all excellent venues to discover these captivating pieces. Many cities boast mural trails or outdoor installations that celebrate local artists, providing a unique opportunity to explore art in a community context. Additionally, art fairs and festivals often showcase large artworks from various artists, allowing visitors to engage directly with the creators. When exploring these environments, take the time to appreciate the context of each piece—consider how it interacts with its surroundings and the messages it conveys. Engaging with large artworks in their intended spaces enhances the overall experience and deepens your appreciation for their scale and significance.

Appreciating the Impact of Large Artworks

Large artworks play a vital role in the art community, serving as powerful expressions of creativity, culture, and human experience. From the emotional depth of abstract art to the vibrant storytelling of murals and the immersive nature of installations, these pieces invite us to engage with art in profound ways. As we explore the world of big artwork, we uncover not only the talents of remarkable artists but also the hidden gems that enrich our surroundings. By appreciating and seeking out large artworks, we deepen our connection to the art world and inspire ourselves to see beyond the ordinary.