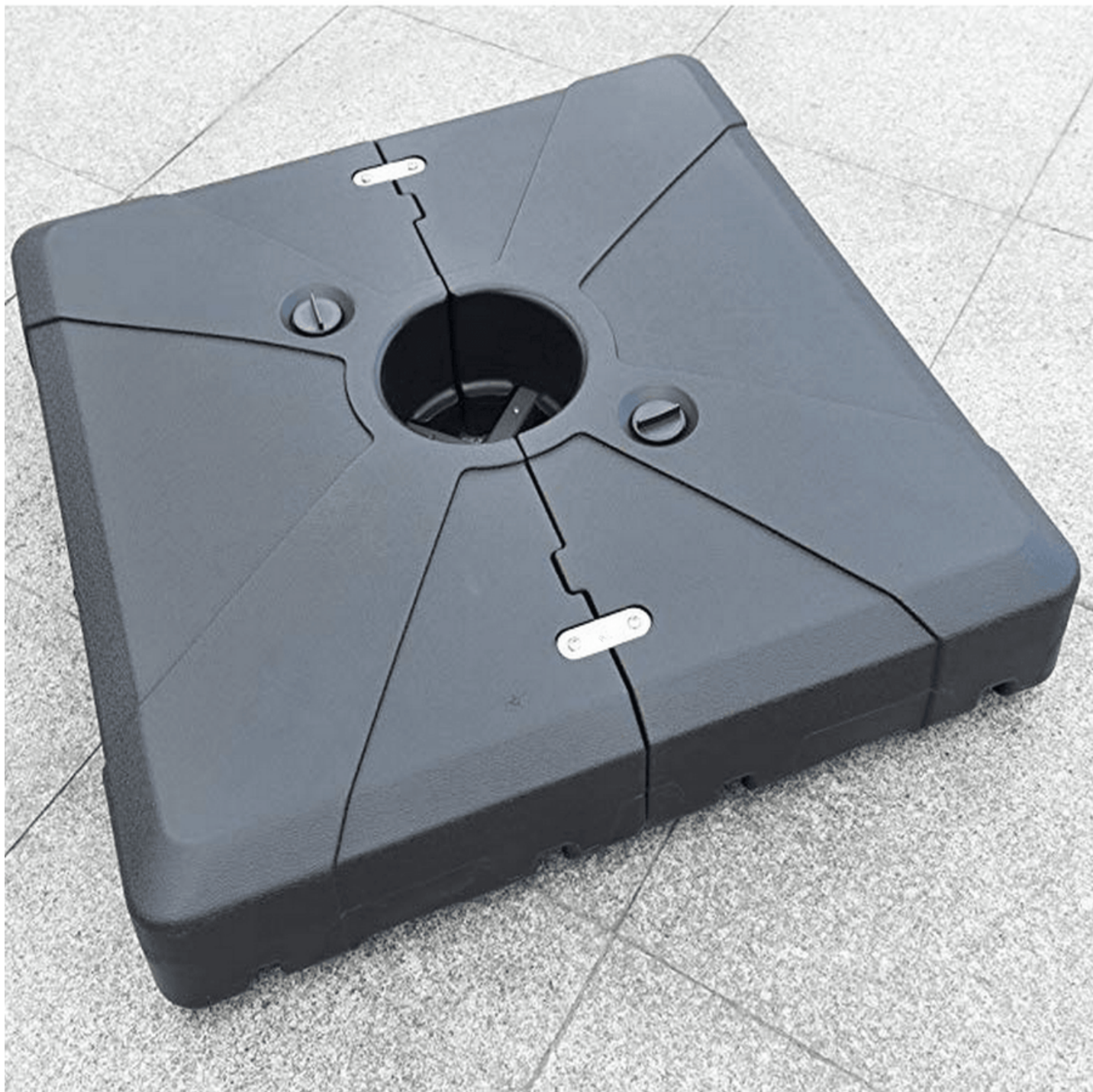


Transform Your Balcony: Discover the Perfect Umbrella Base That Stays Secure!

Having a comfortable outdoor space can significantly enhance your living experience, especially if you live in an apartment or a condo with a balcony. A patio umbrella not only provides shade but also adds aesthetic appeal to your balcony. However, securing that umbrella properly is crucial, particularly when it comes to safety and stability. A reliable [patio umbrella base for balcony railings](#) ensures that your umbrella stands firm against gusty winds while offering you the shade you need on sunny days. This article aims to help you navigate the options available for umbrella bases that can be effectively attached to balcony railings, ensuring that your outdoor oasis remains enjoyable and secure.



Understanding the Needs for a Patio Umbrella Base on a Balcony

Using a patio umbrella on a balcony comes with its unique set of challenges. Many balconies have limited space, making it essential to find a base that doesn't take up too much room while still providing adequate support. Wind factors are another crucial consideration; balconies are often subject to stronger gusts than ground-level spaces, which can cause unsecured umbrellas to tip over or even become airborne. Safety is paramount; an umbrella that isn't secured properly can become a hazard for anyone nearby. Additionally, many balconies have railing designs that may complicate the installation of traditional umbrella bases. Understanding these challenges is the first step in selecting the right base that will not only fit but also withstand the conditions typical to elevated outdoor spaces.

Types of Umbrella Bases Suitable for Balcony Railings

When searching for the perfect patio umbrella base for your balcony railing, you'll come across several options that cater specifically to these elevated spaces. Weighted bases are a popular choice; they provide stability through added weight and can often fit snugly against the railing. Another excellent option is clamp-on designs, which attach directly to the railing, offering superior security and minimizing the risk of tipping. These bases are adjustable, allowing you to customize the fit based on your railing's size and shape. Additionally, some bases come with locking mechanisms that provide added peace of mind. Each type has its benefits, and understanding these variations can help you choose a base that suits your specific balcony setup.

Factors to Consider When Choosing a Patio Umbrella Base

Choosing the right patio umbrella base involves several important factors. First and foremost, consider the weight of the base; a heavier base will generally provide better stability against wind. Material is also crucial; look for bases made from durable materials such as resin, concrete, or steel that can withstand the elements over time. Compatibility with your specific railing type is another key factor; some bases are designed to work with specific railing dimensions and styles. Lastly, ease of installation should not be overlooked. A base that can be easily attached and removed will save you time and effort, especially when adjusting for weather conditions. By keeping these factors in mind, you can make an informed decision that ensures your umbrella remains securely in place.

Installation Tips for Securing Your Umbrella Base

Proper installation of your patio umbrella base is crucial for safety and stability. Start by carefully reading the manufacturer's instructions to familiarize yourself with the assembly process. If you're using a weighted base, position it close to the railing for optimal support. For clamp-on bases, ensure that they are firmly attached to the railing, tightening any screws or locks as recommended. It's important to check that the umbrella pole fits snugly into the base and that any locking mechanisms are engaged. If possible, test the stability by gently pushing the umbrella to see if it remains upright. Regularly check the base's installation, especially after strong winds or storms, to ensure that it remains secure. These steps will help you enjoy your outdoor space without worrying about your umbrella collapsing or becoming a safety hazard.

Maintaining Your Umbrella Base for Longevity

To keep your patio umbrella base in good condition, regular maintenance is key. Clean the base periodically to remove dirt and debris, especially if it's made from materials that can corrode or stain. For bases that are exposed to rain or moisture, ensure they dry thoroughly to prevent mold and mildew. If your base has any moving parts, such as clamps or locks, lubricate them as needed to maintain functionality. During the off-season, consider storing your base indoors to protect it from harsh weather conditions. By following these maintenance tips, you can extend the life of your patio umbrella base, ensuring it remains a reliable fixture on your balcony for years to come.

Final Thoughts on Securing Your Umbrella

Choosing the right patio umbrella base for your balcony railing is essential for both safety and enjoyment of your outdoor space. By understanding the unique challenges of using patio umbrellas on balconies, exploring the various types of bases available, and considering key factors such as weight and installation ease, you can make a well-informed decision. Remember to follow installation tips for securing your umbrella base and maintain it properly for longevity. With the right base, your balcony can become a delightful retreat where you can relax and enjoy the outdoors, no matter the weather.