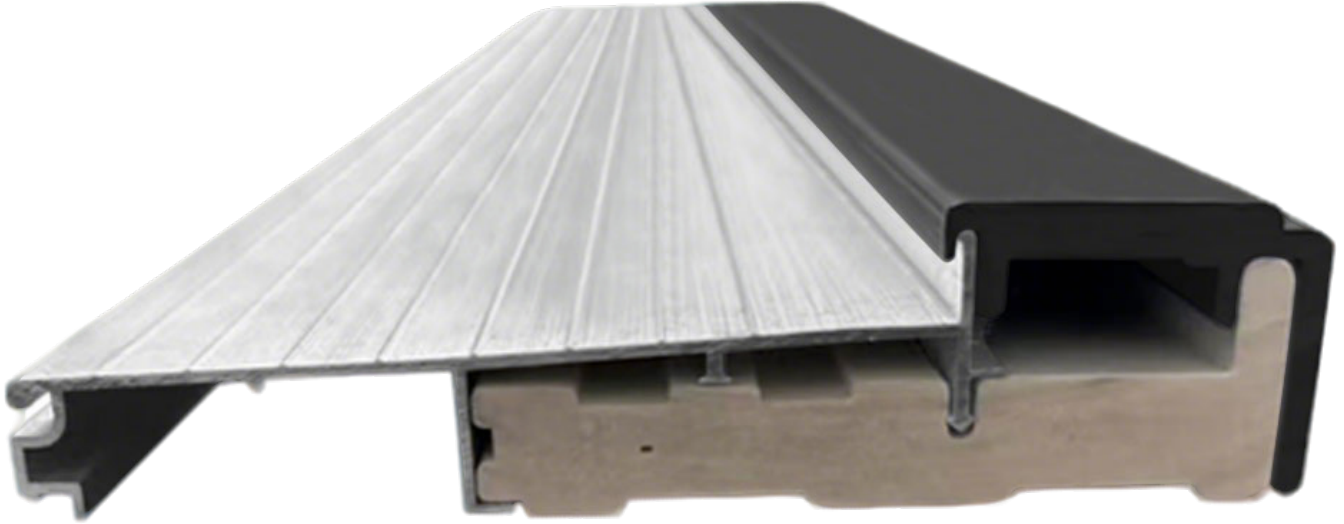


Unlock the Secrets to Choosing the Perfect Exterior Door Size!

Choosing the right [exterior door size](#) is a crucial decision for homeowners, impacting not just aesthetics but also functionality and energy efficiency. A door that fits improperly can lead to drafts, security issues, and even aesthetic mismatches that can detract from a home's curb appeal. Many homeowners face challenges when navigating the world of door sizes, often overwhelmed by the numerous options and standards available. This article aims to shine a light on standard exterior door sizes, variations, and helpful measurement guidelines, ensuring you have all the information you need to make an informed decision.



Understanding Standard Exterior Door Sizes

Standard dimensions for exterior doors are generally categorized into several styles: single doors, double doors, and sliding doors. The most common standard size for a single exterior door is 36 inches wide by 80 inches tall. Double doors typically measure 72 inches wide, while sliding doors often come in widths of 60 inches or 72 inches, with heights that can also reach 80 inches. It's important to understand these measurements, as they serve as a baseline for most residential homes. Many manufacturers adhere to these standards, which simplifies the selection process when you're replacing or installing new doors. Having a standard size means that you can find a variety of designs and styles that fit without needing extensive modifications to your home's entryway.

Variations in Exterior Door Sizes

While standard sizes are a helpful guideline, variations do exist, largely influenced by architectural styles, regional preferences, and specific building codes. For instance, in some areas, particularly in older homes or those built in specific architectural styles, doors may be taller or wider than the standard sizes. A common non-standard height is 84 inches, which can provide a more grand entrance. Additionally, in regions with unique weather conditions or specific aesthetic trends, homeowners may opt for custom sizes that better suit their needs. Understanding these variations is essential, as they can significantly impact not only the door's appearance but also its functionality in terms of insulation and security.

Measuring for the Perfect Fit

To ensure you choose the perfect exterior door size, accurate measurement is key. Begin by removing any existing door and measuring the rough opening, which is the space where the door will fit. Measure the width and height at the top, middle, and bottom of the opening, taking the smallest measurement to ensure a proper fit. It's also important to check the depth of the frame to ensure the new door will fit snugly without any framing issues. If you're replacing an old door, you might want to consider the condition of the frame; any warping or damage may require additional adjustments. A friend of mine faced this issue recently when renovating her home and learned the hard way that even minor discrepancies in measurement could lead to significant complications during installation.

Factors to Consider When Choosing Exterior Door Sizes

Choosing the right exterior door size involves more than just measurements; several factors should influence your decision. Firstly, consider the architectural style of your home—traditional homes may benefit from larger, more ornate doors, while modern styles may suit sleek, minimalist designs. Additionally, climate considerations can play a significant role; homes in colder regions might opt for thicker, insulated doors that are often heavier and bulkier. Lastly, personal preferences can't be overlooked. A door should reflect your personal style while also providing functionality. Think about how often the door will be used, the amount of traffic it will see, and how it will complement your home's overall design.

Choosing the Right Exterior Door for Your Home

In summary, understanding both standard and varying sizes of exterior doors is essential for any homeowner looking to enhance their home's curb appeal and functionality. Careful measurement and consideration of architectural styles, climate factors, and personal preferences are vital to selecting the perfect door. Taking your time during this decision-making process will ensure you choose a door that not only fits perfectly but also enhances your home's aesthetic and functional qualities. Remember, the right exterior door can be a stunning focal point that adds value to your property.