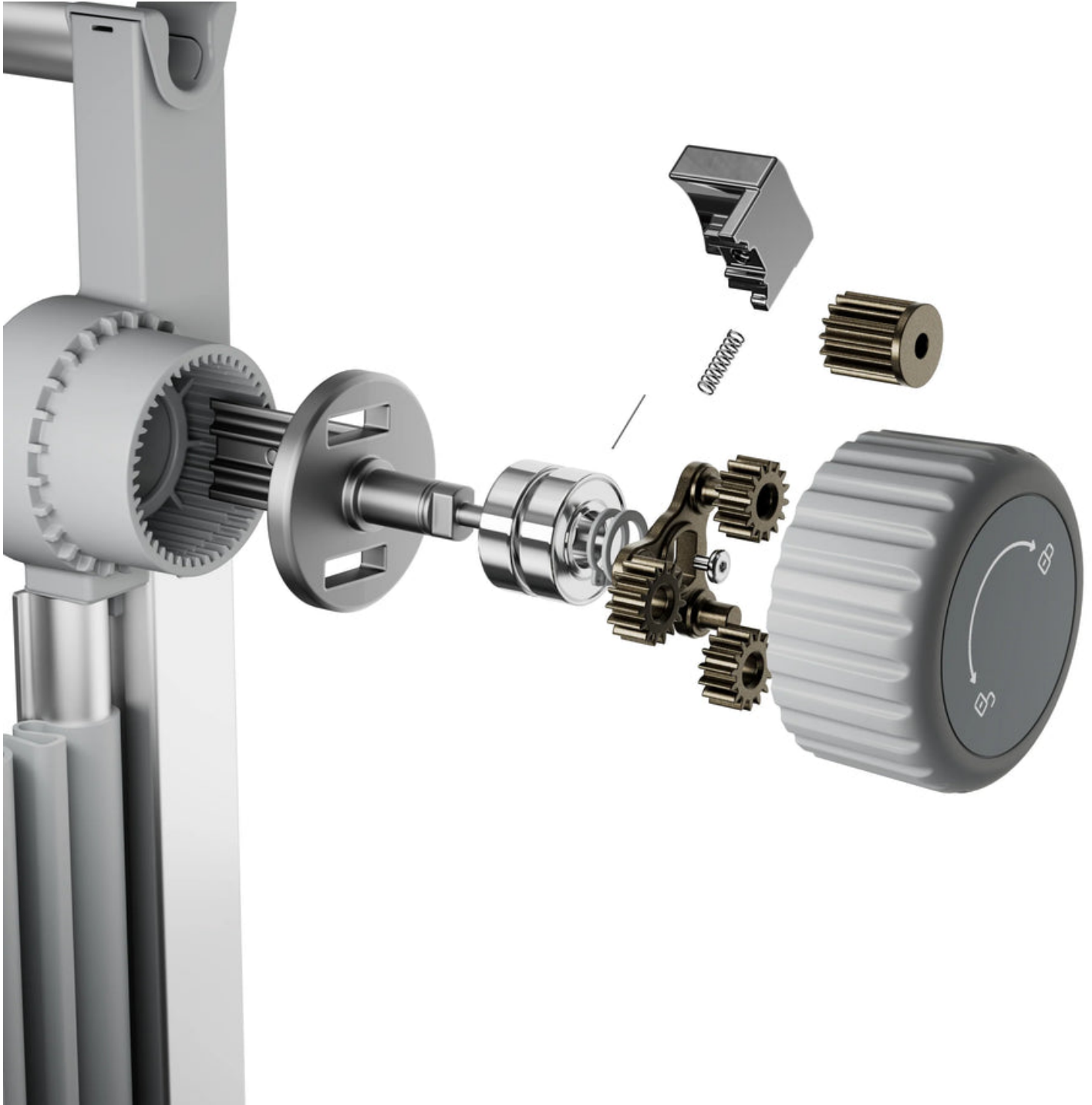


Unlock Your Creativity: Transform Your Space with the Perfect Rug Tufting Frame!

Rug tufting is more than just a hobby; it's a vibrant form of self-expression that has taken the crafting world by storm. As more people discover the joy of creating their own rugs, the need for the right tools becomes paramount. Central to this crafting journey is the [rug tufting frame](#), a vital piece of equipment that can make or break your tufting experience. Choosing the right frame not only enhances the quality of your work but also makes the crafting process more enjoyable. Handmade rugs allow you to personalize your living spaces in a unique way, adding warmth and character that store-bought options simply can't match. Whether you're a seasoned crafter or a curious beginner, investing in a suitable rug tufting frame can unlock endless creative possibilities.



The Basics of Rug Tufting

Rug tufting is a technique that involves creating a rug by inserting yarn into a backing material using a tufting gun or manual tufting methods. This craft allows for a wide range of designs, from simple shapes to intricate patterns. The basic technique involves following a design template while ensuring the yarn is securely anchored into the backing. Common materials used in rug tufting include wool or acrylic yarns for their durability and variety of colors, alongside a sturdy backing material like burlap or primary cloth that provides structure. The tufting process begins by preparing your design on the backing, then using a tufting tool to punch the yarn through, creating loops that will eventually form your unique rug. This hands-on process offers a satisfying glimpse into textile artistry, with every tuft contributing to a masterpiece that can transform your space.

Why a Rug Tufting Frame is Essential

A rug tufting frame serves as the foundation for your crafting experience, providing the necessary support for your backing material while you work. A high-quality frame ensures that your project remains taut and stable, which is crucial for maintaining consistent tension in your yarn. This stability not only improves the ease of tufting but also directly influences the overall quality of the finished product. When selecting a rug tufting frame, consider features such as its size, adjustability, and the materials used in its construction. A well-designed frame can accommodate various project sizes while allowing for adjustments to suit your crafting style. Some frames even offer portability, making it easier to take your crafting on the go or store it away when not in use. Ultimately, the right frame acts as an ally in your creative endeavors, enhancing both the process and the outcome.

Choosing the Right Rug Tufting Frame

When it comes to purchasing a rug tufting frame, several key factors should guide your decision-making process. First, consider the size of the frame; it should be large enough to accommodate your intended rug dimensions without compromising the stability needed during tufting. Adjustability is another essential feature, as it allows you to customize the tension and setup according to your preferences. Portability is also worth considering, especially if you plan to craft in different locations or need to store your frame compactly. Assess the quality of the frame by examining the materials used; a sturdy construction will stand the test of time and usage. Features like clamps for securing the backing and the ability to easily change designs can significantly enhance your tufting experience. By keeping these factors in mind, you can select a frame that aligns with your creative vision and crafting needs.

Getting Started with Your Rug Tufting Frame

Setting up your rug tufting frame is an exciting first step in your tufting journey. Begin by selecting a design that inspires you—this could be a simple geometric pattern or a more complex illustration. Once you have your design, prepare your materials, ensuring you have all the necessary yarns and backing ready. To set up your frame, securely attach the backing material, making sure it is taut to avoid any sagging during the tufting process. Common mistakes to avoid include not properly tensioning the backing, which can lead to uneven tufting, and neglecting to check your tufting tool's settings before you start. Take your time during this setup phase; a well-prepared frame will lead to a smoother crafting experience and a more polished final product. Remember, the journey of tufting is as rewarding as the finished rug itself!

Enhancing Your Rug Tufting Experience

Choosing the right rug tufting frame is crucial for successful rug crafting, as it lays the groundwork for your creative expression. By understanding the importance of a quality frame, you can enhance your tufting experience and produce beautiful handmade rugs that reflect your style. Embrace your creativity with the techniques discussed in this article, and let your imagination run wild as you transform simple materials into stunning pieces of art. Handmade rugs not only beautify your home but also serve as a testament to your craftsmanship, inviting warmth and personality into your living spaces.