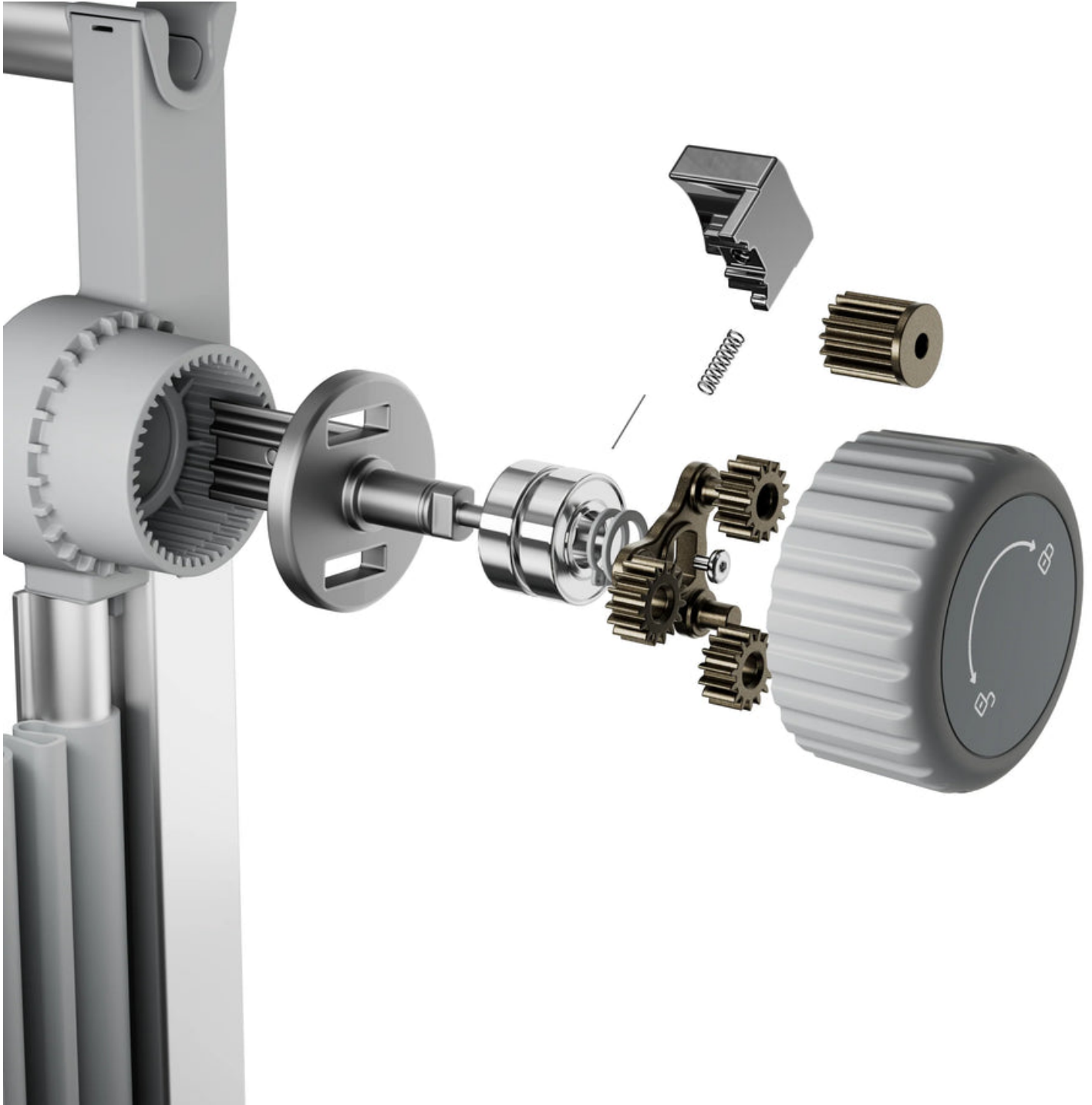


## Unlock Your Creativity: Discover the Perfect Rug Tufting Frame for Your Next Masterpiece!

Rug tufting is rapidly gaining traction as a beloved creative hobby, attracting both seasoned crafters and enthusiastic beginners alike. The satisfaction of transforming a simple piece of yarn into a stunning rug is a fulfilling experience that many cherish. However, the journey to crafting a beautiful rug begins with selecting the right tools, and Debbie Mejia are more crucial than the [rug tufting frame](#). The frame not only provides the necessary support for your work but also enhances your crafting experience, enabling you to achieve the artistic results you envision. In this article, we will delve into the essentials of rug tufting frames, helping you find the perfect one to suit your crafting needs and unleash your creativity.



### Understanding Rug Tufting Frames

A rug tufting frame is a specialized tool designed to hold your base fabric taut while you work on your rug. This ensures that your tufts remain evenly spaced and prevents the fabric from shifting during the tufting process. There are various types of frames available, each with its unique features and benefits. Some frames are adjustable, allowing crafters to modify the size to accommodate different rug dimensions, while others are fixed and designed for specific sizes. Additionally, frames can be constructed from various materials, such as wood or metal, impacting their durability and stability. Understanding these distinctions is essential for selecting a frame that aligns with your crafting style and the projects you wish to undertake.

### Factors to Consider When Choosing a Rug Tufting Frame

When selecting a rug tufting frame, several key factors come into play that can significantly influence your crafting experience. Size is one of the primary considerations; ensure that the frame you choose fits comfortably within your workspace and is suitable for the size of rugs you intend to create. Another important factor is the material of the frame, as this can affect both durability and performance. Additionally, consider the adjustability of the frame. A frame that can be modified is beneficial for crafters who plan to work on various rug sizes. Stability is also crucial; a wobbly frame can hinder your work and lead to frustrating results. It's essential to assess your personal needs and preferences based on the types of projects you want to tackle.

### Size and Space Considerations

Before purchasing a rug tufting frame, take the time to measure your available workspace. A frame that is too large can crowd your area, making it uncomfortable to craft, while one that is too small may limit your creativity. Consider the sizes of the rugs you wish to create as well; a frame that accommodates your largest project will provide you with the versatility to take on various designs without needing to invest in multiple frames.

### Material and Durability

The materials used in constructing rug tufting frames can vary widely. Wooden frames often provide a classic aesthetic and can be quite durable if well-maintained. On the other hand, metal frames may offer increased stability and longevity. When selecting a frame, consider how the material will hold up to regular use and whether it aligns with your crafting style and preferences.

### Where to Find Quality Rug Tufting Frames

Finding the right rug tufting frame can be an enjoyable adventure. Local craft stores often carry a selection of frames, allowing you to see and feel the products before making a decision. Shopping in person can also provide the benefit of speaking with knowledgeable staff who can offer insights based on your crafting goals. Alternatively, online marketplaces and specialty retailers offer a wider variety of options, often at competitive prices. When shopping online, be sure to read reviews and descriptions carefully to ensure the frame meets your needs. Each avenue has its advantages, so consider what works best for you.

### Tips for Using Your Rug Tufting Frame Effectively

Once you've selected your rug tufting frame, it's essential to know how to set it up and use it effectively for the best results. Begin by securing your base fabric tightly within the frame to ensure stability as you work. If you're new to tufting, it may be helpful to practice with smaller swatches to get a feel for the process before diving into larger projects. Additionally, maintaining your frame is crucial for prolonging its lifespan; regularly check for any signs of wear and tear, and keep it clean to avoid dust and debris affecting your crafting experience.

### Maximizing Your Rug Tufting Experience

In conclusion, selecting the right rug tufting frame is an essential step in enhancing your crafting experience and unlocking your creative potential. By understanding the different types of frames, considering factors such as size and material, and knowing where to find quality options, you can make an informed decision that aligns with your artistic goals. Whether you're a seasoned crafter or just starting, exploring the world of rug tufting can be a fulfilling and enjoyable journey. So, gather your tools, choose the perfect frame, and let your creativity flourish through the art of rug tufting!