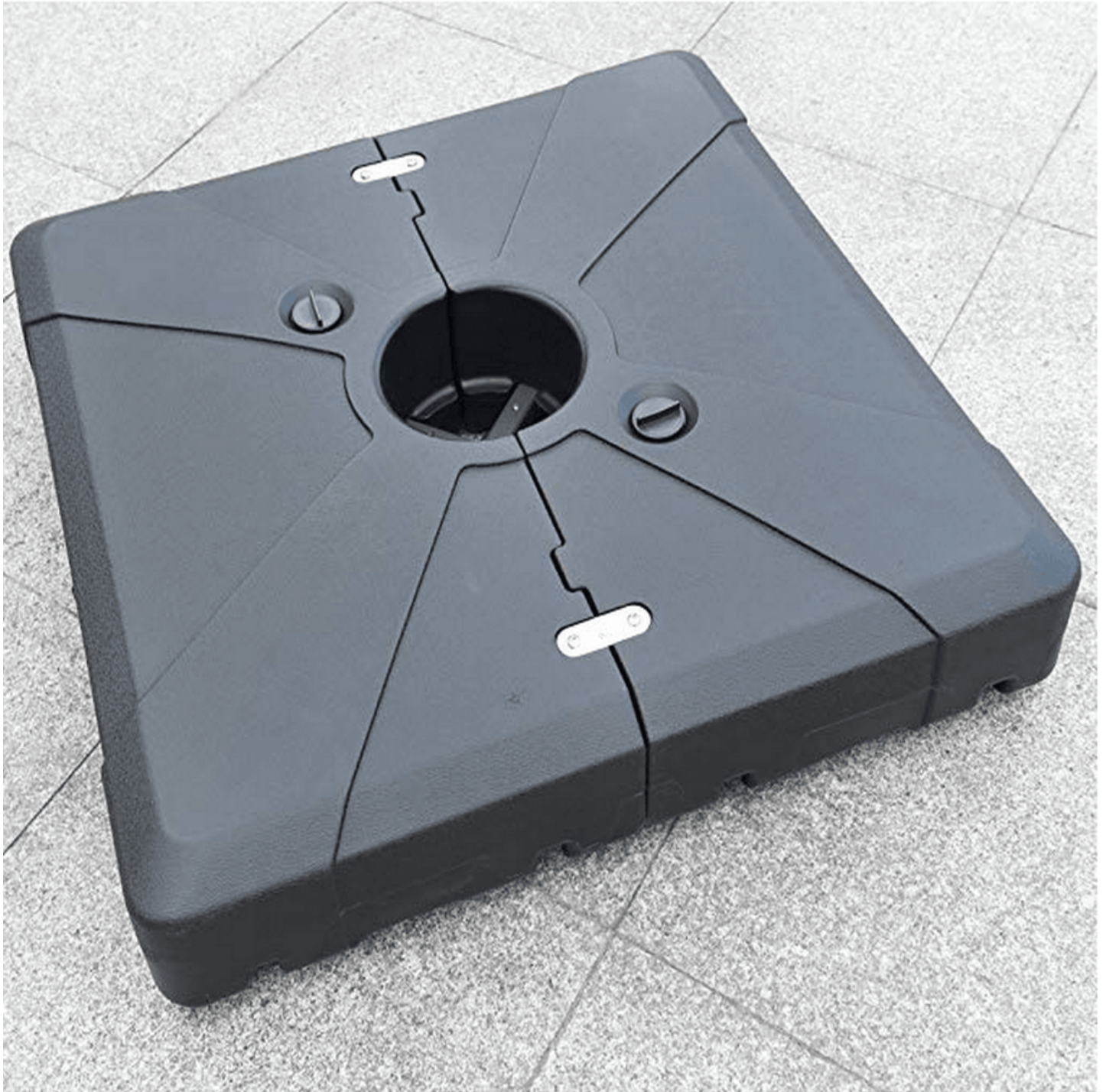


Unlock Your Balcony's Potential: Discover the Perfect Patio Umbrella Base Today!

Imagine stepping onto your balcony, a cup of coffee in hand, ready to soak up the sun while enjoying a good book or a friendly chat. But wait—without proper shade, the sun can quickly turn your serene oasis into a sweltering sauna. This is where a [patio umbrella](#) comes to the rescue, offering not just relief from the heat but also a stylish touch to your outdoor space. However, the umbrella's effectiveness heavily relies on having the right base. A stable, compatible base is crucial, especially when it comes to balcony railings where space is limited and safety is paramount. In this article, we will explore various options for patio umbrella bases that work well with balcony railings, ensuring you can enjoy those sunny days to the fullest.



Understanding Patio Umbrella Bases

A patio umbrella base serves as the anchor for your umbrella, providing the necessary stability to withstand wind and other environmental factors. The right base will not only keep your umbrella upright but also enhance safety, preventing accidents that could arise from a toppling umbrella. There are several types of patio umbrella bases available in the market, each designed for different needs and preferences. Some are heavy and robust, while others may be more lightweight and portable, making them suitable for various settings. Understanding these differences is essential when choosing a base that complements your umbrella and fits your balcony's unique requirements.

Key Considerations for Balcony Railings

Choosing the right patio umbrella base for your balcony railing involves several important considerations. First and foremost, you need to think about the weight of the base. A lightweight base may not provide the stability you need on a windy day, while an overly heavy one could be challenging to manage in a smaller space. Compatibility is another critical factor; the base must securely attach to the railing without causing damage. Safety is paramount, especially in high-rise apartments where a falling umbrella could pose a risk to both residents and pedestrians below. Taking the time to assess these factors will help you find a base that not only fits your aesthetic but also ensures peace of mind.

Types of Patio Umbrella Bases for Balcony Railings

When it comes to patio umbrella bases suitable for balcony railings, there are a few popular options to consider. Each type comes with its own set of advantages and disadvantages, making it essential to evaluate them based on your specific needs. Clamp-on bases, for instance, are designed to attach directly to the railing, providing a secure fit without taking up additional space. On the other hand, weighted bases offer stability and can be placed on the floor, but they may require more room. Understanding these differences will help you make an informed choice that enhances your outdoor experience.

Clamp-On Bases

Clamp-on bases are a fantastic option for balconies with limited floor space. These bases attach securely to the railing, allowing the umbrella to remain upright without occupying precious ground area. One of the key advantages of clamp-on bases is their ease of installation; you can set them up in minutes without any tools. Additionally, they tend to be lightweight and portable, making them ideal for those who may want to relocate their umbrella frequently. However, it's essential to ensure that the clamp-on base is compatible with your specific railing type for optimal safety.

Weighted Bases

Weighted bases, often made from concrete or filled with sand, are designed to provide stability and support for your patio umbrella. These bases are typically placed on the ground and can support larger umbrellas, making them suitable for wider balconies. Their weight helps resist strong winds, ensuring that your umbrella remains securely in place. However, the downside is that they can take up more space and may be challenging to move. If you have a larger balcony area, a weighted base could be the perfect choice for your needs.

Comparing Options: Which Base is Right for You?

When it comes to selecting the right patio umbrella base for your balcony railing, comparing your options is crucial. Start by considering the size of your umbrella and the weight capacity of the base. Look for user reviews and testimonials that provide insight into the performance of different bases in various weather conditions. Additionally, think about your balcony layout—do you have enough space for a weighted base, or would a clamp-on base be more appropriate? By evaluating these factors carefully, you can select a base that not only fits your umbrella perfectly but also enhances your overall outdoor experience.

Maximizing Your Outdoor Experience with the Right Base

Choosing the right patio umbrella base for your balcony railing is a vital step in maximizing your outdoor enjoyment. The stability and safety of your umbrella depend heavily on the base you select. From understanding the types of bases available to assessing your specific needs, this article has provided insights to guide your decision. Take the time to evaluate your balcony's layout, the expected weather conditions, and the design of your umbrella before making a choice. With the right patio umbrella base, you can transform your balcony into a comfortable, enjoyable retreat for you and your loved ones.